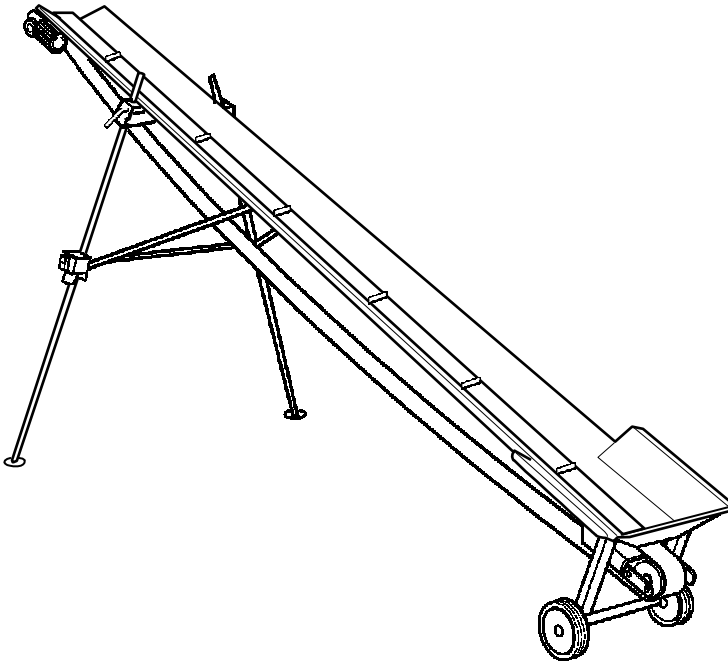


Faxes

Operation manual for log conveyor
100 mm, 200mm



Read all instructions before using the log conveyor,
especially safety instructions.

Faxes Fabriks AB
Hestravägen 7
330 26 Burseryd
Tel +46 (0)371-500 08,
500 80

Contents

	Page
Company Presentation	2
Product Presentaion	2
Symbol explanations	2
Security	3
Operation	4
Delivery, supplied parts	5
Mounting of worm gear engine	6
Mounting of flanges	6
Mounting, wood paving and stays	7
Mounting overview	8
Mounting starter and lock handle	9
Assembly of conveyor belts	9
Start/stop	10
Technical Data	11
EU certificate of conformity	11

Company Presentation

Faxes Fabriks AB is a family owned business, established 1910th. The production of firewood machines is now in the third generation. It is located in Västbo often referred Gnosjö region. Sweden's most industrialized area.

We appreciate your confidence of buying a Faxes machine, and wish you good work with your new log conveyor.

Product Presentation

The log conveyor is designed to withstand the stresses and demands that professional woodhandling requires. The conveyors are made of sheet metal and they are driven by a worm gear of high quality in the upper part. The stabilizers have a broad base for good stability.

Symbol explanations

Symbol Explanation

Please read carefully the following sections!



WARNING! Wood conveyors can cause personal injury.



WARNING! Moving conveyor band. May cause pinching!



WARNING! High voltage!



Wear protection gloves



Wear safety shoes



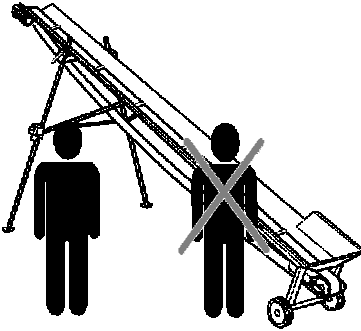
The CE label indicates that the machine is CE certified.

Security



Warning

The log conveyor may be used only in the manner prescribed in this manual. The user of the machine is responsible for ensuring that the instructions are read and followed. To avoid misunderstandings, the machine must only be operated by one person! In the danger area around 2m the machine, only operator may stay.



Machine safety



Warning

It is forbidden to remove the machine's warning signs and safety equipment. The machine must not be modified or rebuilt

The log conveyor may only be used to transport wood. Any other use is not permitted.

Never walk under the machine when it's working. WARNING for falling objects



Warning Risk of pinching.

Do not clean the conveyor belt, when the machine is running.

Always handled with great care.

Personal safety



When working with the log conveyor, wear gloves and safety shoes.

Noise: Sound pressure level at operator's place. 71 dB(A).

Operation

The machine must be set on a flat, stable surface

Keep good work around machinery, so you don't risk falling on pieces of wood or other waste lying on the ground..



Always check before use that the cables and power plugs not are damaged.

The machine must only be connected to three-phase 400V power outlet.

If the conveyor band runs in the wrong direction, the direction must immediately be changed.

The direction of rotation can easily be changed with the phase switch, that is mounted on the starting device. (See page 10)

Moving short distances

The log conveyor is equipped with two transport wheels, which makes it easy to move. Lift the support legs in the opposite end, where the wheels are located, and the log conveyor can then be rolled on the wheels

Do not move the machine with the engine running!



FORBIDDEN to use log conveyoyr with defective or removed security features. **ALWAYS SWITCH OFF** the log conveyoyr when you leave.

The log conveyor should be positioned next to the machine it will serve (woodsaw, log splitter), in such way to prevent the dangerous work of the other machines.

Pay close attention to the safety instructions that you find under the heading SECURITY on page 3.

General safety

- The log conveyor can be used only by adults who are familiar with the machine's functioning and well aware of the security measures described. It must not be handled by more than one person at a time
- Do not wear loose clothes or jewelry, wristwatches, etc. when working with the log splitter. These can be trapped or hooked up in the wood, or any machine part with a serious injury as a result.
- Always check that the wood is free from objects that could damage your machine or cause personal injury.

Storage of machinery

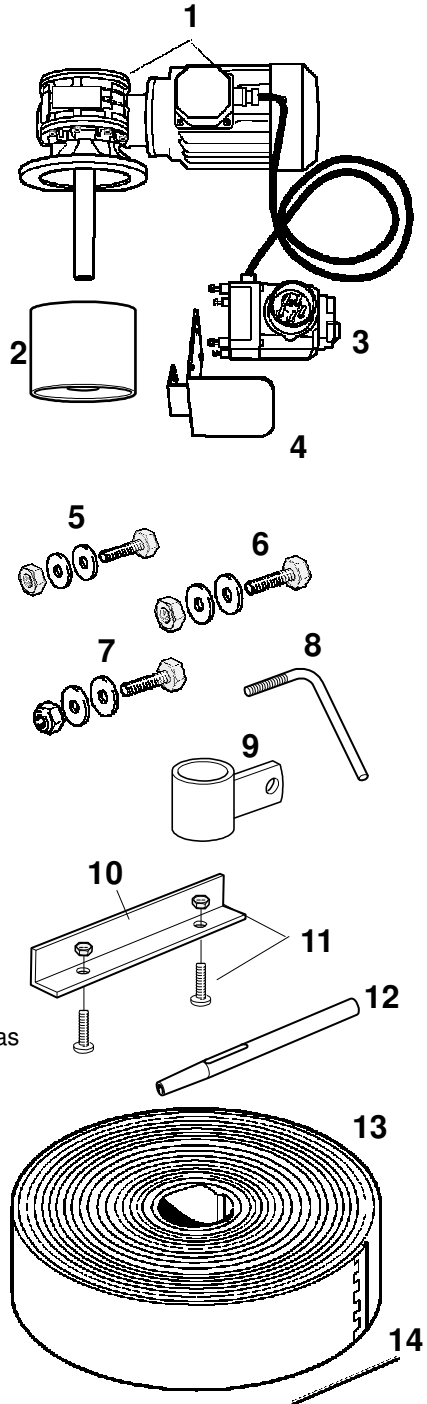
When not in use, the machine should be stored under roof or be well covered with crimps. Parts not rust protected can be protected with oil or rust preventive.

Delivery

The box that comes with delivery shall include the following elements:

Other (big) parts, like support legs and rods are packed along the sheet metal profiles of the conveyor.

1. 1 pc Worm gear motor with drive shaft.
2. 1 pc Conveyor band roller.
3. 1 pc Starting device with cable mounted and 4 pc nuts and washers
(Not on the 220 volt-version)
4. 1 pc Bracket for starting device.
5. For mounting of the worm gear package.
4x M8x30 screws, 4x M8 nut with four washers and 4x of spring washers.
6. For mounting of the sheet metal profiles.
3x M10 x 25 screws, 3x nuts M10 and 6x washers M10.
7. For mounting of the support legs.
5x M10 x 25 screws, 5x nuts M10 and 5x washers M10.
8. 2 pc Lock levers for support legs.
9. 2 pc Galvanized sockets with bracket for the assembly of the support legs.
10. 12 pc Galvanized flanges for mounting on the conveyor band. No. 10 and 11. only for the 100mm conveyor. (200 mm conveyor has vulcanized flanges on the band.)
11. 24 pc Screw M5x25 with 24x nut M5 for mounting of flanges on the conveyor belt. (Except 200mm)
12. 1 pc Hole cutter, used to make holes in the conveyor belt at the installation of flanges.
13. 1 pc conveyor band
14. 1 pc Sprint to join the conveyor band.



Mounting

Installation of the worm gear motor

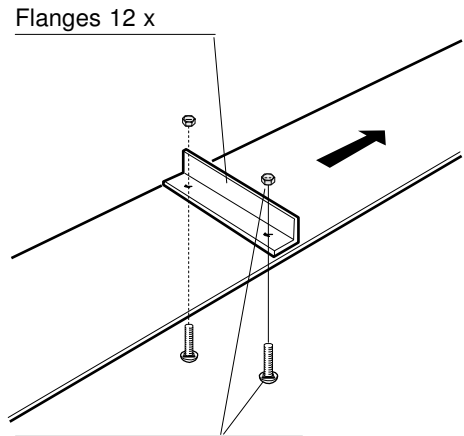
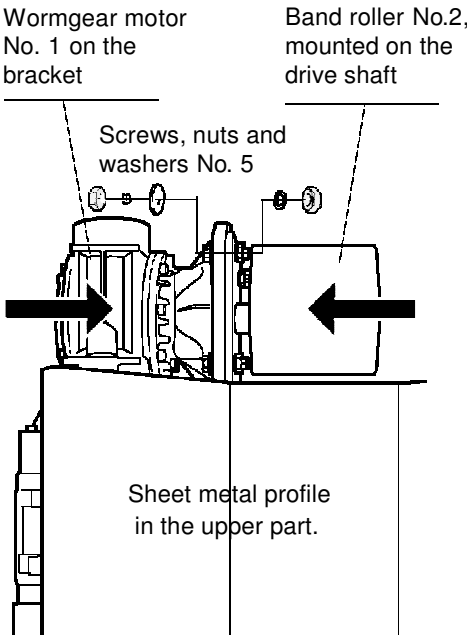
Mount wormgear No.1 on the bracket in the upper part of the conveyor. Use the screws No.5. Then mount the conveyor band roller No. 2 and fix it.

Mounting of flanges on the conveyor band (Not on the 200mm –model).

Roll out the belt on a flat surface. Turn the fabric side up. Mark the holes with an awl, marker or similar. Use the flange, as a template. The distance between the flanges should be about 80 cm on the 5.0 m model and about 90 cm on the 7.5 m model.

Lay the conveyor belt on a firm surface such as a wooden plank. Make the holes in conveyor belt with the hole-pipe No. 12.

Flanges No. 10 mounted with screw and nuts No. 11. Fastened on the grooved side of the band. The arrow shows the band's moving direction.



Screws 24x (M5) and nuts 24x (M5)

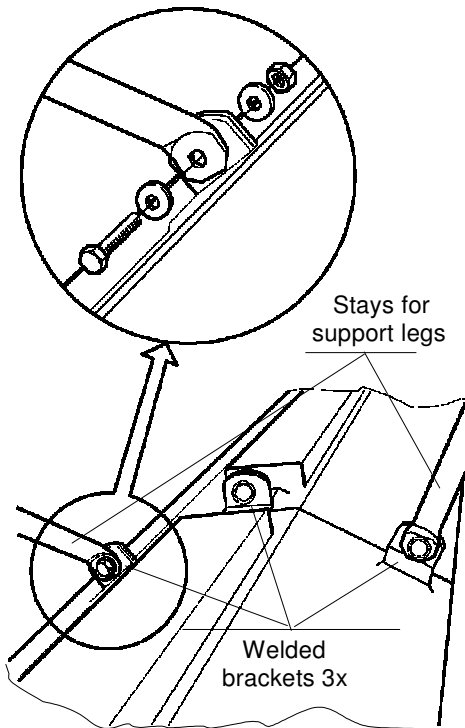
Montage

Mounting of sheet metal profiles and stays to the support legs

Put sheet metal profiles upside down on a flat surface and ensure that the brackets are opposite each other.

Mount the stays to the support legs in the two outer brackets as shown below.

Screws No. 6



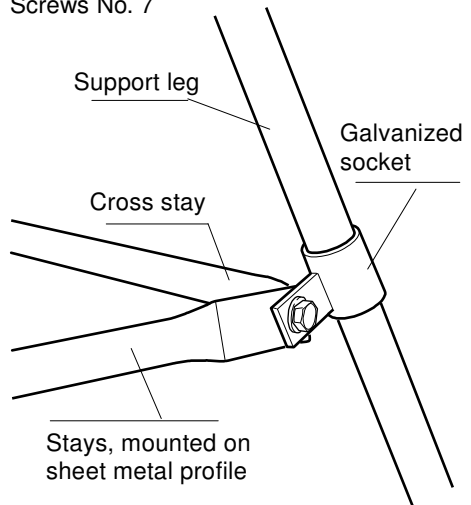
The sheet metal profiles are placed upside down and are then screwed together.

Mounting of socket for support legs and stays.

Push on the galvanized sockets No. 9 on the support legs.

Mount the supports (which was mounted on sheet metal profiles at the last assembly moment) with the cross stay that connects the two support legs. The same screw is used to link all three parts

Screws No. 7

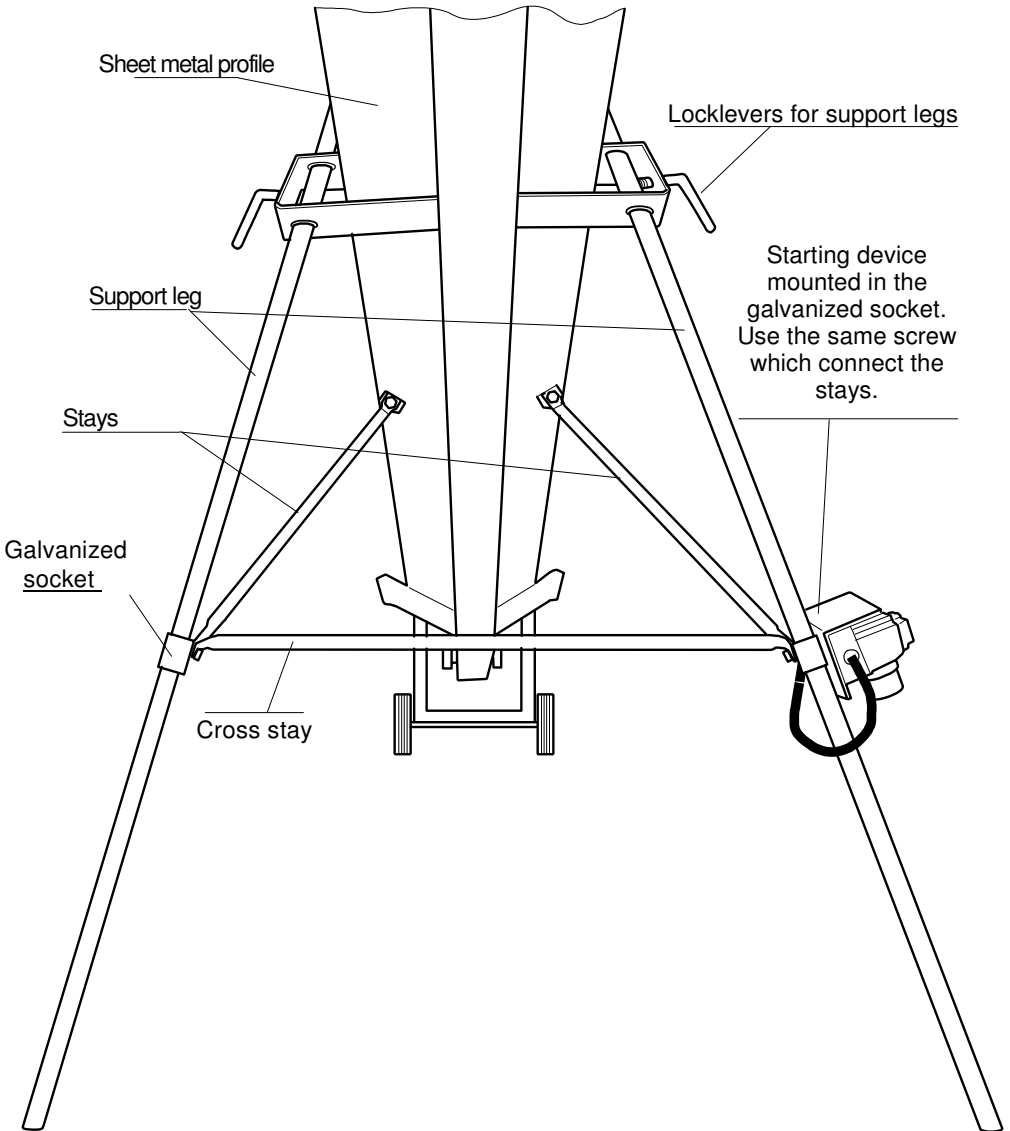


The figure show the attachment between socket , support leg, cross stay and stay.

See also the overview on the next page.

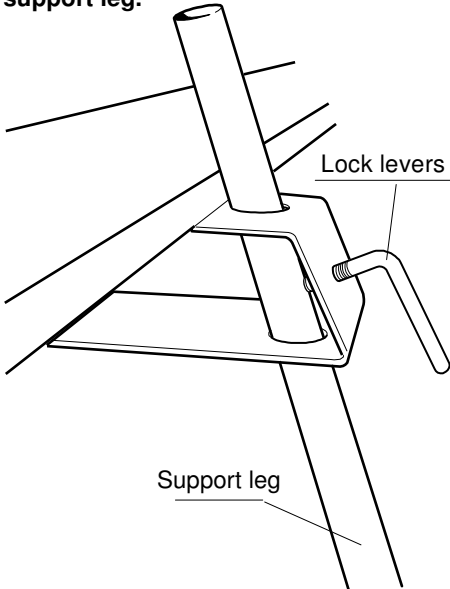
Mounting of Support leg, Stay and Cross stay

Overview seen from below



Mounting

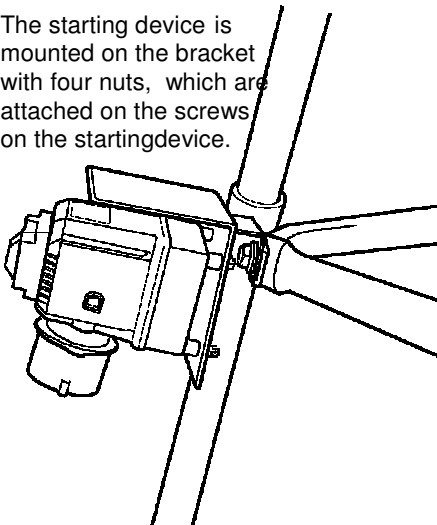
Mounting the lock levers to the support leg.



Mounting the starting device

Attach bracket no.4 (which also serves as protection for the starter) on socket no. 9. The bracket has a groove that makes it easy to attach to the screw that holds the supports together.

The starting device is mounted on the bracket with four nuts, which are attached on the screws on the starting device.



Merge the conveyor band

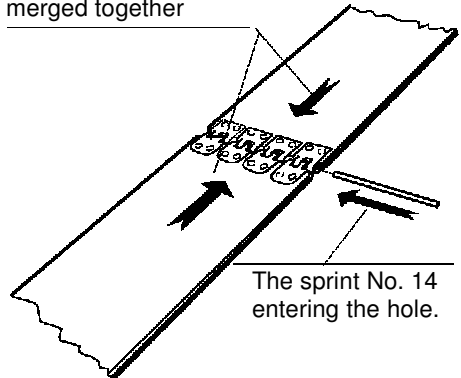
The conveyor band comes in a roll.

First mount the flanges (see chapter "mounting of the flanges" on page 6.) The conveyor band is placed on the sheet metal profile with the ribbed rubber side up. The band is then placed over the rollers of the sheet metal profiles both ends.

Merge the conveyor belts ends together, under sheet metal profile, as shown. Entering the hole opening (that is formed when the ends are brought together) with sprint No. 14.

Note! If the band is difficult to merge together you can loosen the bottom roll with a screw. The band then becomes slack. (See page 10)

The band ends are merged together



The picture show the conveyor band from below, ie with the back side (fabric side) up.

Montage

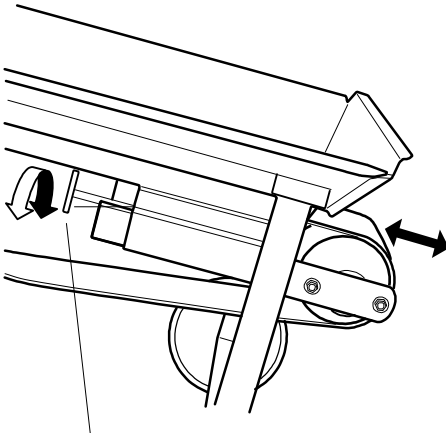
Tightening of the conveyor band

When the band is fitted, the band should be stretched slightly. The knob to stretch the band is placed under the sheet metal profile. (See picture below)

Right tension is when the band "hanging down" around. 30 cm below the sheet metal profile, measured from the middle. Note Do not tension the band too hard.

Check band tension every now and then during operation.

For longer storage of the log conveyor, you should slack the band slightly.



The screw to adjust the tension of the conveyor band.

Start and Stop

The log conveyor has a starter with built-in motor protection. (Not on the 220V-model).

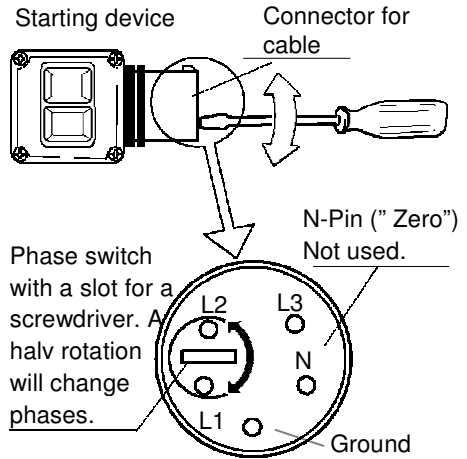
Start the log conveyor with the green start button

Stop the log conveyor with the raised red button.

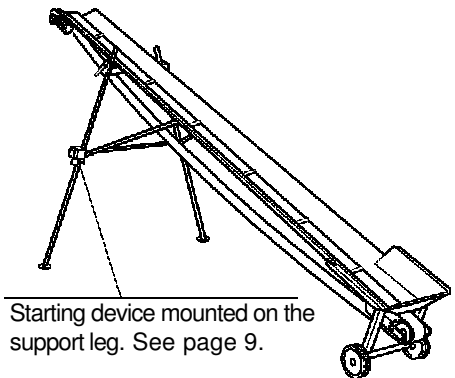
If the conveyor belt going backwards, the motor needs changed direction of rotation. This is done on Phase switch on the connector.

Phase switch

In order to change the motor rotation the Phase switch needs to be rotated a half turn. (See Figure)



Connect the connector to the 3-phase 400V.



Starting device mounted on the support leg. See page 9.

Technical data

Technical data	100 mm	200 mm
Length	5000 mm	5000 mm
Band width	100 mm	100 mm
Max. Height	3000 mm	3000 mm
Min. Height	1500 mm	1500 mm
Throw in height	500 mm	300 mm
Throw in width	550 mm	550 mm
Worm gear motor	0,37 kW	0,37 kW
Speed of band	0,6 m/s	0,6 m/s
Weight netto	80 kg	100 kg
Power	3-Phase 400V oder 220 V	3-Phase 400V oder 220 V

EU CERTIFICATE OF CONFORMITY

Faxes Fabriks AB
S-330 26 Burseryd
Tel +46(0)371-500 08
Fax +46(0)371-500 48

We hereby certify that this product:

Type: Log conveyor 100, 200

Conforms to the following directives and standards.
AFS 1994:48
ELSÄK-FS 1994:9

Directives:
Machinery Directive 89/392/EEG, 91/368/EEG
Low Voltage Directive 73/23/EEG, 93/68/EEG

Burseryd, 2006 12 01



Lars Davidsson, Managing director

Faxes



Type 100 mm (5,0 M)



Type 200 mm (5,0 M)

Faxes Fabriks AB
S-330 26 Burseryd
Tel. +46(0)371-500 08
Fax. +46(0)371-500 48